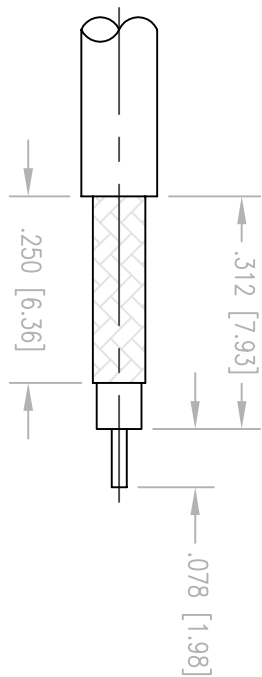
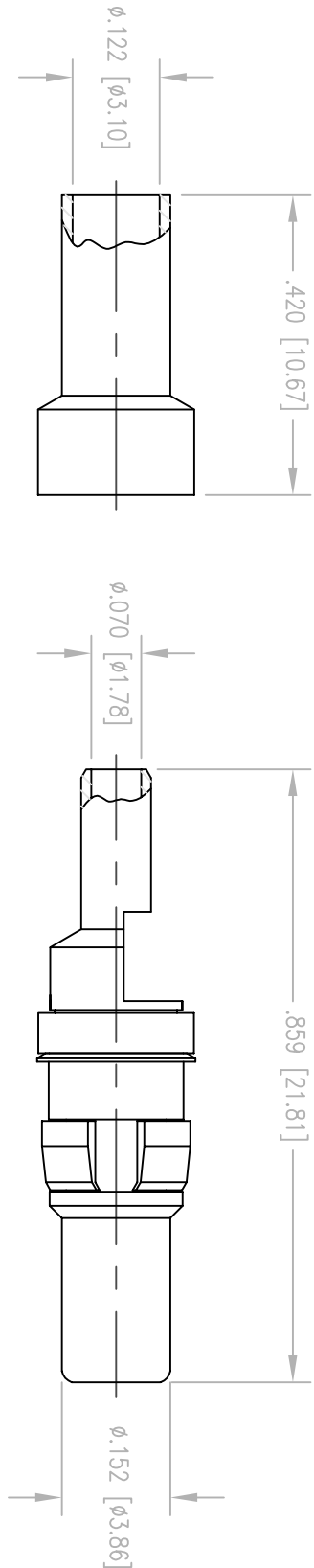


REV.	DESCRIPTION	REV. APP'D.	DATE
D	NPR 3056	JMH	10/9/02



CABLE TRIMMING DIMENSIONS

NOTES:

1. MATERIALS:

- CONTACT: COPPER ALLOY
- INSULATOR: TEFLON PER ASTM D1710
- CLIP RING AND SPRING WASHER: PHOSPHOR BRONZE PER ASTM B103
- ALL OTHER METAL PARTS: BRASS PER ASTM B16

2. FINISH:

- CLIP RING: .000100 MIN. NICKEL PER QQ-N-290 OVER COPPER FLASH
- FERRULE AND SPRING WASHER: .000005 MIN. GOLD PER MIL-G-45204 OVER .000050 MIN. NICKEL PER QQ-N-290
- ALL OTHER METAL PARTS: .000030 MIN. GOLD PER MIL-G-45204 OVER .000050 MIN. NICKEL PER QQ-N-290

- 3. FOR USE WITH RG-316 CABLE OR EQUIVALENT.
- 4. FOR CABLING PROCEDURES USE CAP 9-01 WITH TRIMMING DIMENSIONS SHOWN.
- 5. CRIMP FERRULE USING .128 HEX DIE.

PER ASME Y14.5M-1994 UNLESS OTHERWISE SPECIFIED: DIMENSIONS ARE IN INCHES (MM) TOLERANCES: .xx ± .01 [0.254] .xxx ± .005 [0.127] ANGLES: 3°		SCALE: 4:1	
CUSTOMER DRAWING		TITLE	
Winchester Electronics		RDM STRAIGHT PLUG	
400 Park Road Watertown, CT 06795		NORTHROP GRUMMAN	
DRAWN JMH	DATE 10/9/02	CHECKED	DATE
APPROVED	DATE	APPROVED	DATE
A		270-910-0630G	
SH: 1	OF: 1	REV: D	